

RAK Sales Office T. +971 7 227 4333
F. +971 7 227 4303

Toll Free UAE 800 4020
P.O Box 31113, Ras Al Khaimah, UAE
Website www.rakproperties.net
Email info@rakproperties.com



MINA AL ARAB
MALIBU



Come home to the
perfect vacation.





Introducing Mina Al Arab, a new waterfront community in Ras Al Khaimah, UAE where lush landscaping, protected coastal wetlands and natural pristine beaches come together with homes, hotels and world-class amenities to shape a vacation experience that you'll be delighted to call home.

Whether it becomes your primary residence, weekend getaway or vacation retreat, Mina Al Arab is a destination that offers the very best of vacation living.

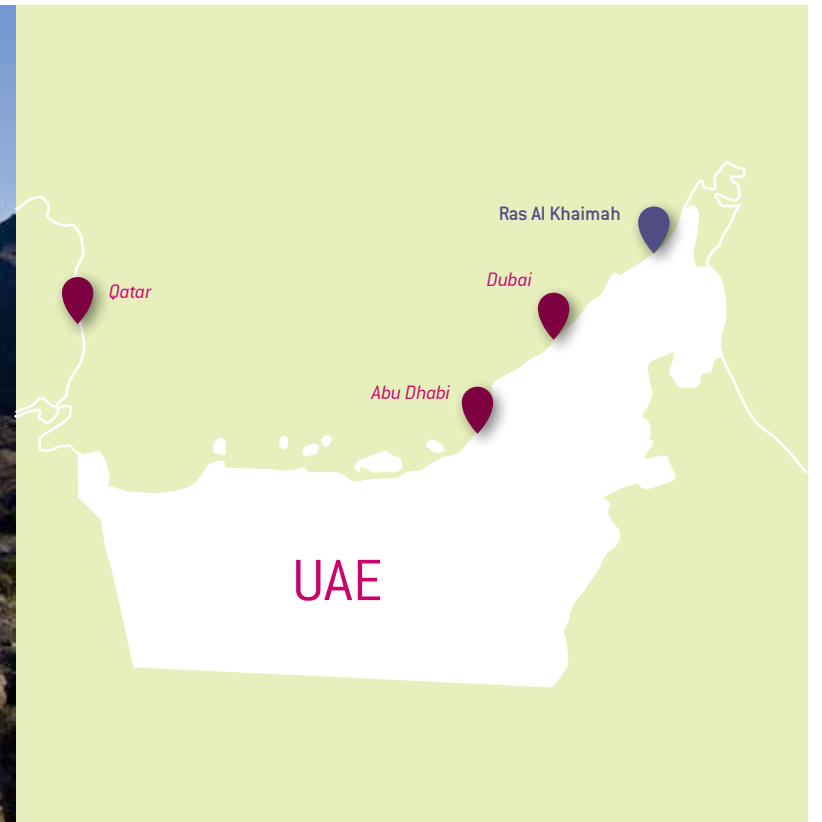
Ras Al Khaimah

A rich history.
An exciting future.





Ras Al Khaimah is the most northern emirate in the UAE. Possessing a rich archaeological heritage, the emirate features a wealth of landscapes and environments, from fertile plains and mountains to coastal areas and desert. Among the fastest growing tourist destinations in the Gulf region, Ras Al Khaimah hosts an array of attractions and amenities, including museums, natural springs, and a world-class shopping mall, all a short drive from Dubai.



Where home is holiday.

Time slows down. Lushly landscaped spaces beckon and each day is new and exciting.
When your home is Mina Al Arab, life, like a holiday, is anything you make it.








Master Plan.

Six distinct districts, each with their own character and inviting atmosphere - this defines the unique master plan of Mina Al Arab. Designed to offer a range of inviting activities and surroundings, the districts are carefully crafted around the kind of experience residents and visitors wish to have at the destination. From beautiful homes and resort hotels on the Arabian Gulf, to the expansive beauty of ecological preserves, wetlands and beaches, they all come together to create one exceptional destination - Mina Al Arab.

- 
- The map illustrates the layout of Mina Al Arab, featuring a coastline on the left with a beachfront area. A winding road or path traverses the landscape, connecting various districts. A large, circular feature, likely a lagoon or wetland, is situated in the center. A prominent road intersection with a roundabout is visible in the lower right. The map is overlaid with numbered markers corresponding to the legend.
- | | | | |
|---|----------------|----|-------------------------------|
| 1 | The Beachfront | 9 | Eco Lodge |
| 2 | The Lagoon | 10 | Dunes Retreat |
| 3 | The Harbour | 11 | Environmental Learning Centre |
| 4 | Granada | 12 | Wellness Centre |
| 5 | Malibu | 13 | Mina Al Arab Mosque |
| 6 | Bermuda | 14 | Wetlands |
| 7 | Marbella | 15 | Theme Parks |
| 8 | Oasis Walk | | |

Malibu

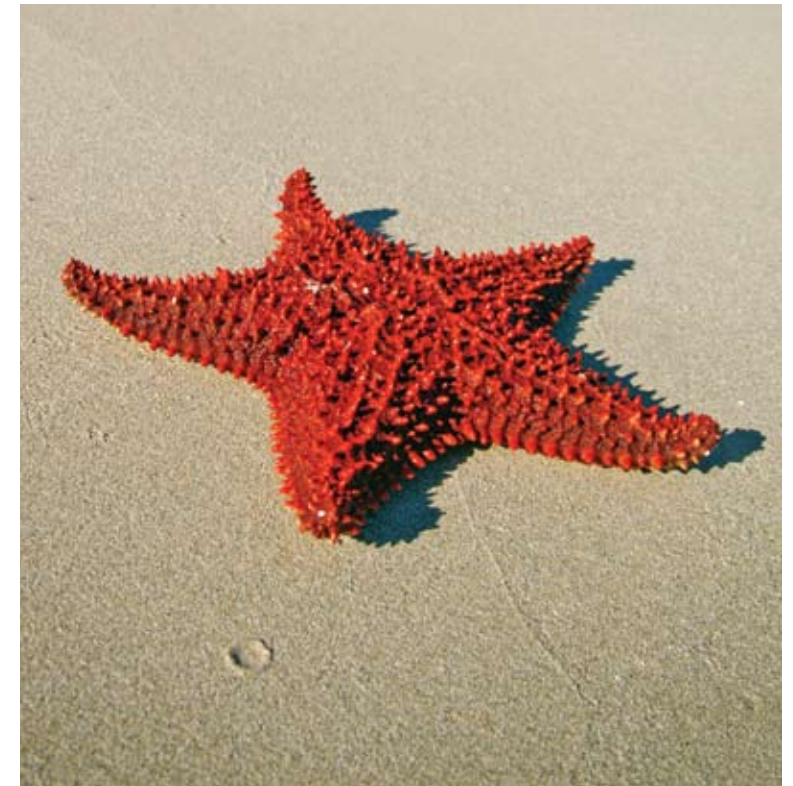
Experience the Malibu
lifestyle, day after day.





Malibu is a home of stars. It offers its residents and visitors the life style of the rich and the famous, a life of luxury. Malibu is not just the name of a place, it's "A way of life". With its long wide white beaches, continual sunshine and casual ambiance, the district of Malibu is the perfect place to turn your life into the ultimate vacation.




At Mina Al Arab we combine in perfect harmony the life style of this beautiful Californian district with modern contemporary facilities and infra structure, making this enchanting district and it's surroundings an ideal place to live.



Malibu Villa Locations





-  Malibu luxury villa
-  Malibu standard villa
-  Malibu townhouse

Malibu Luxury Villa

Ground Level



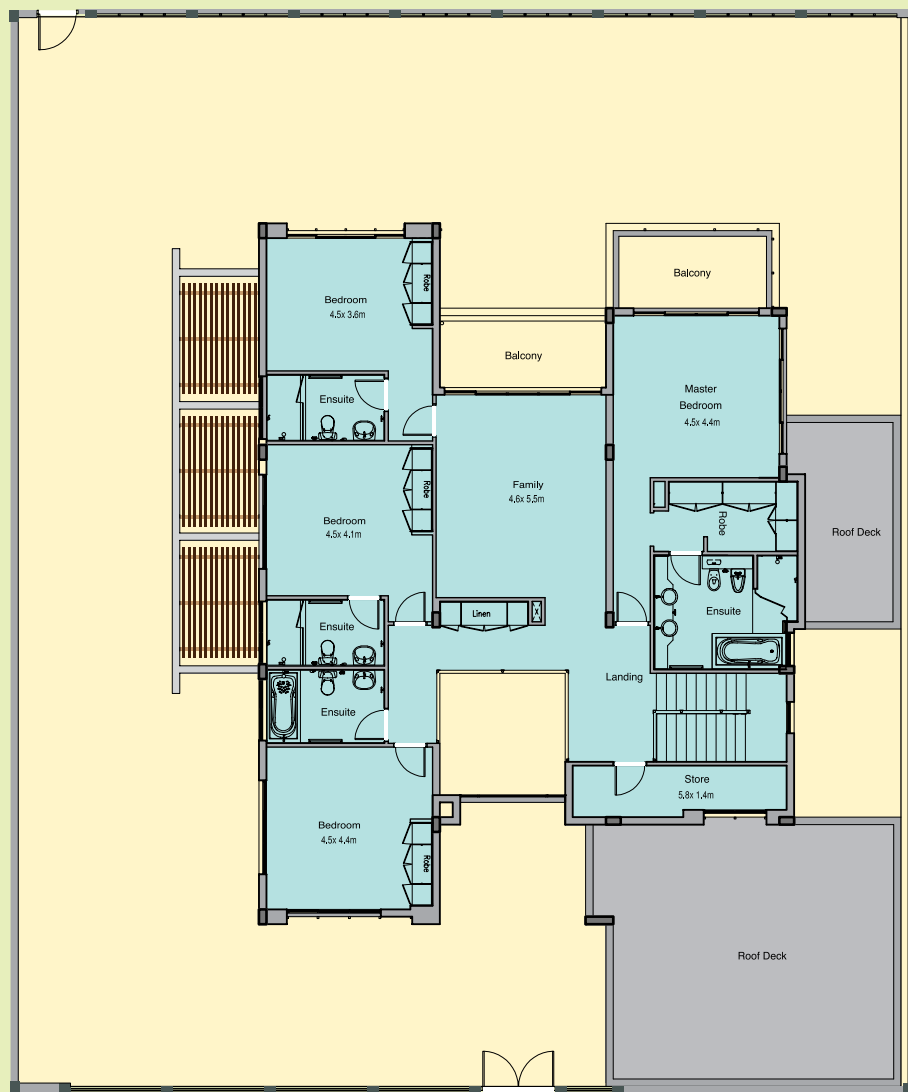
Front Elevation



Back Elevation

* The Artist's Renderings are for illustration purposes only. Actual usable floor space may vary from the value stated. The developer reserves the right to make revisions. All measurements and drawings are approximate. The information is subject to change without prior notice. Do not scale the drawing.





First Level

Technical specifications

- * Ground floor area - 241.175 sq m
- * First floor area - 203.91 sq m
- * Balcony area - 20.57 sq m
- Total Area - 465.66 sq.m or 5010.50 sq.ft

* The Artist's Renderings are for illustration purposes only. Actual usable floor space may vary from the value stated. The developer reserves the right to make revisions. All measurements and drawings are approximate. The information is subject to change without prior notice. Do not scale the drawing.

Malibu Standard Villa

Ground Level

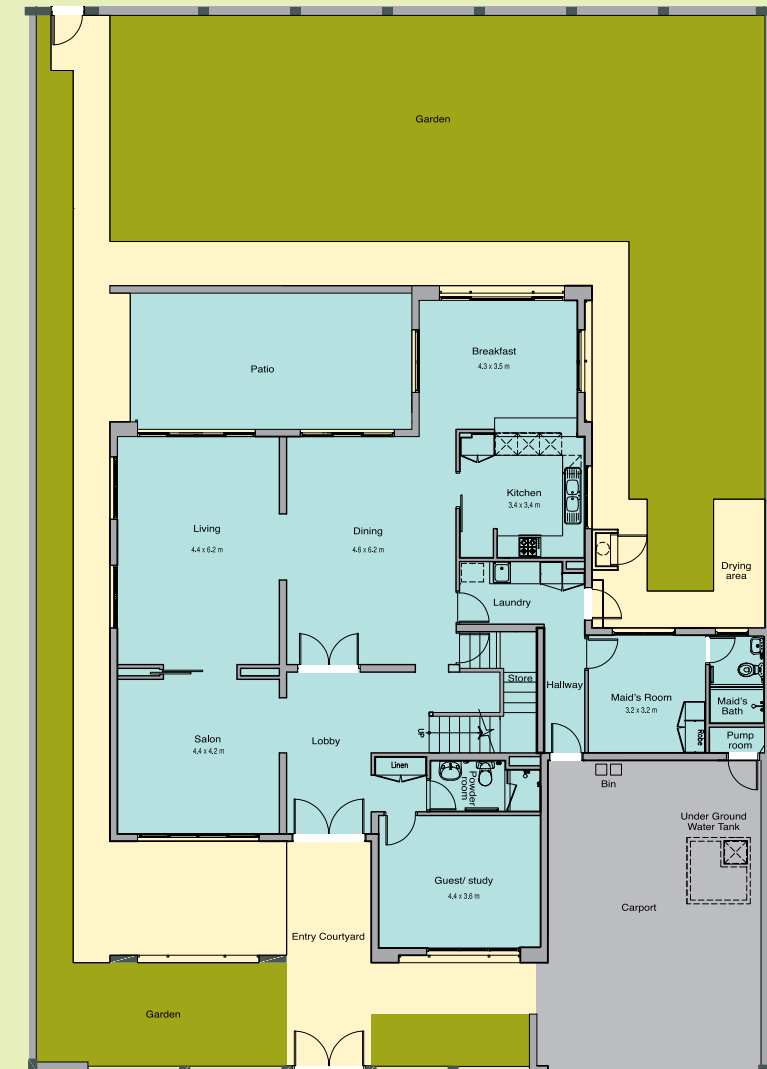


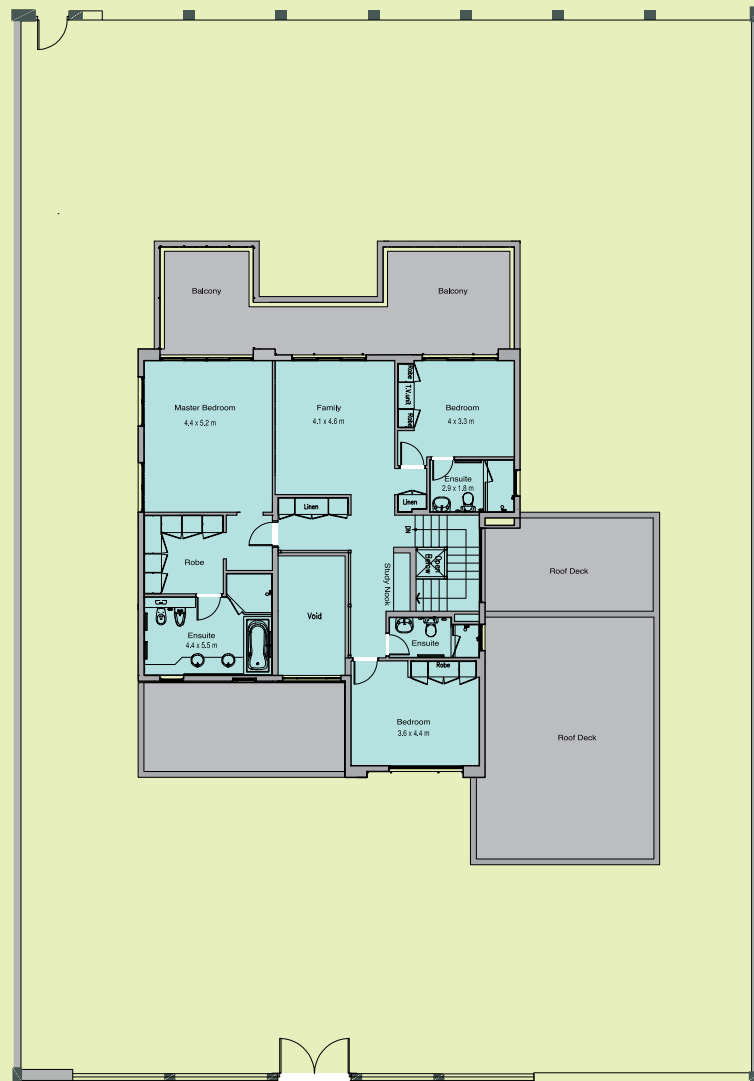
Front Elevation



Back Elevation

* The Artist's Renderings are for illustration purposes only. Actual usable floor space may vary from the value stated. The developer reserves the right to make revisions. All measurements and drawings are approximate. The information is subject to change without prior notice. Do not scale the drawing.





First Level

Technical specifications

- * Ground floor area - 195.09 sq m
- * First floor area - 147.03 sq m
- * Balcony area - 40.82 sq m
- Total Area - 382.94 sq.m or 4120.43 sq.ft

* The Artist's Renderings are for illustration purposes only. Actual usable floor space may vary from the value stated. The developer reserves the right to make revisions. All measurements and drawings are approximate. The information is subject to change without prior notice. Do not scale the drawing.

Malibu Town House

Ground Level

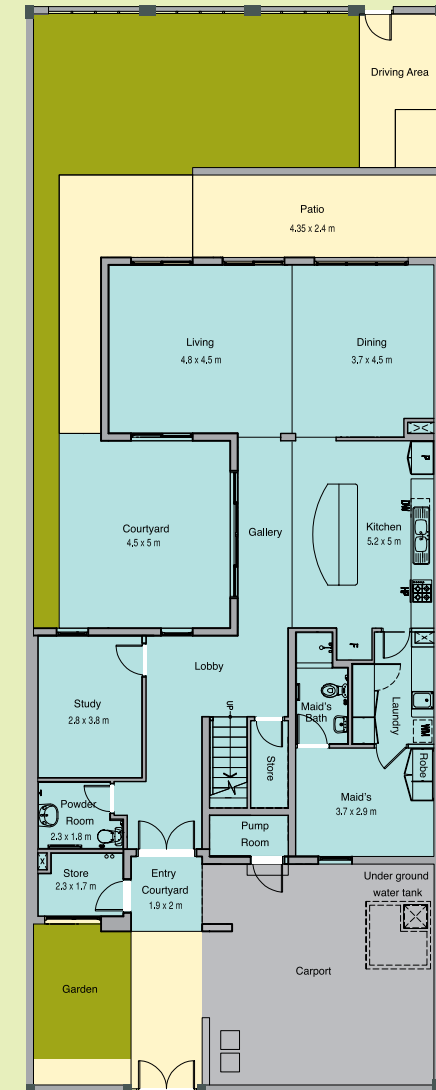


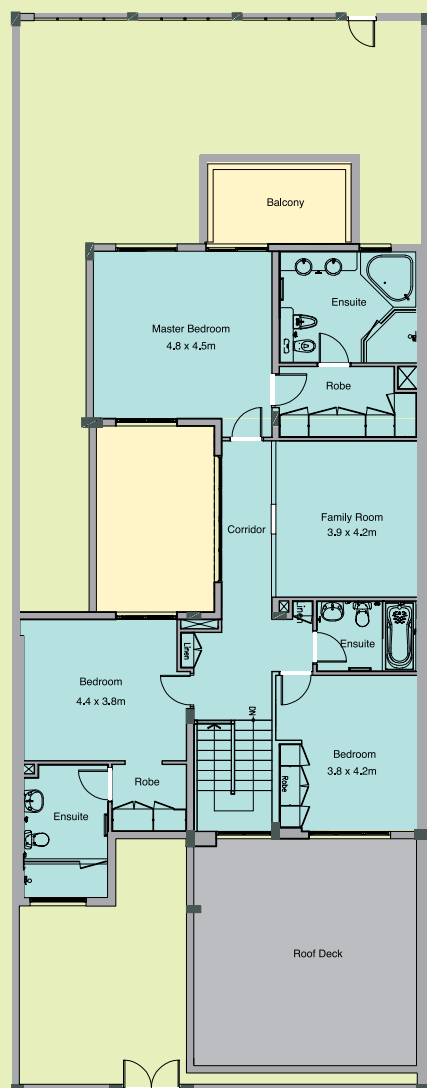
Front Elevation



Back Elevation

* The Artist's Renderings are for illustration purposes only. Actual usable floor space may vary from the value stated. The developer reserves the right to make revisions. All measurements and drawings are approximate. The information is subject to change without prior notice. Do not scale the drawing.





First Level

Technical specifications

- * Ground floor area - 146.55 sq m
- * First floor area - 145.59 sq m
- * Balcony area - 10.12 sq m

- Total Area - 302.26 sq.m or 3252.31 sq.ft

* The Artist's Renderings are for illustration purposes only. Actual usable floor space may vary from the value stated. The developer reserves the right to make revisions. All measurements and drawings are approximate. The information is subject to change without prior notice. Do not scale the drawing.

Amenities

Countless amenities. One exceptional community.

In addition to the range of hotels, resorts, townhouses and eco-tourism possibilities, Mina Al Arab is made complete by a host of amenities which complement the community and make it the ideal home, or the perfect retreat. From fun activities such as Water and Family Park, strategically-placed retail locations for everyday necessities and a medical facility to service the development. Mina Al Arab is a thoughtful meeting of practical amenities and exceptional hospitality for both residents and visitors.

310 hectares of open spaces, ecological preserves
and landscaping

Themed resort hotels

Eco-hotels

Arabian Souk and boutiques

Traditional Abra (water taxis)

Parks

Medical facilities

Mosque

Cafés and restaurants

Exceptional villas, townhouses and apartments

Unique Oasis Walk for resident privacy
and a tranquil environment

Recreational facilities with gym, tennis courts,
spas and sporting activities



Beaches

White sands.
Ideal retreat.

Beautiful natural beaches are an integral part of Mina Al Arab. Whether you're looking for the perfect resort beach to sit, watch the sunset and tides, or the best place to study marine life up close, this unique community offers the best of both worlds. Offering private beaches for villa and townhouses residents, pristine white sands for resort visitors, protected wetlands and salt marshes with coastal dunes, Mina Al Arab makes the best of beachfront living and exploring possible.





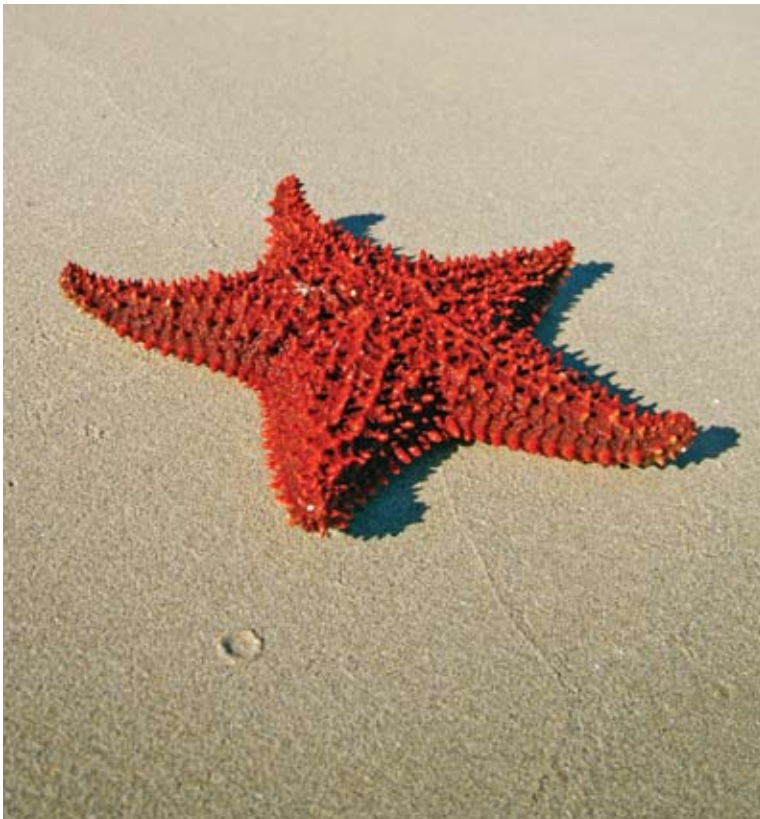
Eco Zone

Capturing and preserving
the beauty of the natural world.





Mina Al Arab was created with the environment in mind. That's why the majority of the development is devoted to preserving and showcasing the beauty of nature in ecological preserves. Occurring as natural coastal wetlands and dunes, the ecological district at Mina Al Arab is home to a variety of fascinating marine life. Visitors will be both entertained and informed through unique nature trails with interpretative centres located at strategic points along the trails, and two eco-hotels will provide guests the opportunity to surround themselves with the beauty and diversity of the natural environment.



Features

General Home Features

Stunning water views from all homes
Homes designed by international architects with choice of layouts and styles
Secure environment, gated living
Designer finishes
Solid core entry door
Walk-in closets with shelves
Aluminum framed glass windows
Distinctive overhead lighting

Technology & Security

High speed internet access
Homes ready for cable television and telephones
24 hour security
24 hour maintenance
Gated entrance to community

External Features

Private covered garage
Remote controlled ready garage doors
Water views and private beaches
Paved drive-in for villas
Residents club
Recreational facilities
Convenient shopping for services required for daily living
Parks and water features



Percentage of Price

[illegible]

Harbour

The heart of the community.

The Harbour district forms the centrepiece of Mina Al Arab. Here, a thriving pedestrian, social environment meets a traditional Arabian Souk selling everything from luxury goods to electronics, carpets, fashion and spices, with spacious apartments located above. The Harbour district can be accessed by land or traditional abra (water taxi), with convenient docking areas throughout the entire development.





Oasis Walk

The diversity of nature.
Careful attention to detail.





The variety of experiences found at Mina Al Arab extends to the natural surroundings residents and guests will discover as they journey through the development. Exemplifying this connection to nature is Oasis Walk. A lushly landscaped corridor, Oasis Walk serves as a pedestrian and bicycle pathway, and acts as a link between islands. Located near the hotel district, Oasis Walk also provides privacy for hotel guests and residents, and offers a diverse and colourful environment that transitions from richly landscaped green areas of shade trees and flora to water gardens, salt marshes and pools.



Resort Hotels

A world-class resort experience.

Mina Al Arab is home to an exciting array of themed resorts, all tailored to offer a variety of vacation experiences, from serene retreat to absolute adventure. Comprising different themes, such as Arabic, South Pacific, Moorish and Venetian, the low rise seafront resorts are designed for stunning views over pristine white sand beaches, and offer an array of restaurants, cafés and entertainment for both the hotel guests and residents of the community.





RAK Properties

Living closer to nature.

RAK Properties is the premier real estate company in the emirate of Ras Al Khaimah. It was formed to move the vision of the emirate forward and support the development of property, tourism and leisure facilities in Ras Al Khaimah. As key drivers of RAK's economic development, the company's projects include sizeable developments that will offer significant returns to investors. With an investment capital of AED 2 billion under management, RAK Properties will create urban residential, recreational and business communities that merge local flavour with international standards.



www.rakproperties.net



